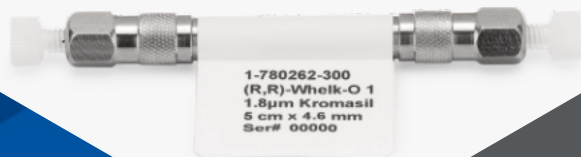
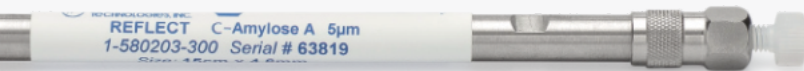


# CHiral Stationary Phases

Depend on innovative columns from the experts in chiral chromatography.



## PACKED COLUMNS AND BULK MEDIA

Compatible with SFC&HPLC  
Scale from Analytical to Prep  
Robust Phases for Long Life


# REFLECT™ NEW Polysaccharide Chiral Stationary Phases

Polysaccharide chiral columns are the most widely used type of chiral stationary phases (CSPs) to separate enantiomers. Reflect™ chiral columns are rugged polysaccharide phases suitable for a wide range of chiral compounds. Unique, proprietary, phase coverage provides excellent peak shape and improved resolution versus leading chiral phases. High resolution greatly improves preparative loading, leading to greater productivity and higher purity separations. Combined with attractive pricing and rapid delivery, Reflect chiral columns deliver the performance and productivity you expect. Reflect columns are available packed with immobilized and coated CSPs.

## IMMOBILIZED

- I-Amylose A**  
*Amylose tris(3,5-dimethylphenylcarbamate)*
- I-Cellulose B**  
*Cellulose tris(3,5-dimethylphenylcarbamate)*
- I-Cellulose C**  
*Cellulose tris(3,5-dichlorophenylcarbamate)*
- I-Cellulose J**  
*Cellulose tris(4-methylbenzoate)*


*Choose Reflect™ immobilized phases for long column lifetimes and compatibility with a broad range of solvents and separation modes (NP, RP, Polar Organic, SFC).*



## COATED

- C-Amylose A**  
*Amylose tris(3,5-dimethylphenylcarbamate)*
- C-Cellulose B**  
*Cellulose tris(3,5-dimethylphenylcarbamate)*

*Choose Reflect™ coated phases for excellent peak shape, resolution, and high loading capacity.*



## Reflect™ Phase Characteristics

Product Name	Selector	Equivalent Competitive Products*	USP	Particle Sizes	pH Range	Maximum Pressure
<b>Reflect I-Amylose A</b>	Amylose tris(3,5-dimethylphenylcarbamate)	CHIRALPAK®IA, IA-3; Lux®i-Amylose 1	L99	3, 5, 10, 20 µm	2 - 9	6,000 psi
<b>Reflect I-Cellulose B</b>	Cellulose tris(3,5-dimethylphenylcarbamate)	CHIRALPAK®IB, IB-3	N/A			
<b>Reflect I-Cellulose C</b>	Cellulose tris(3,5-dichlorophenylcarbamate)	CHIRALPAK®IC, IC-3; Lux®i-Cellulose 5	N/A			
<b>Reflect I-Cellulose J</b>	Cellulose tris(4-methylbenzoate)	No Equivalent Similar to Coated CHIRALPAK®OJ	N/A			
<b>Reflect C-Amylose A</b>	Amylose tris(3,5-dimethylphenylcarbamate)	CHIRALPAK®AD®, AD-H®, AD-3; Lux®i-Amylose-1	L51	3, 5, 10, 20 µm		
<b>Reflect C-Cellulose B</b>	Cellulose tris(3,5-dimethylphenylcarbamate)	CHIRALCEL®OD®, OD-H®, OD-3; Lux®i-Cellulose-1	L40			

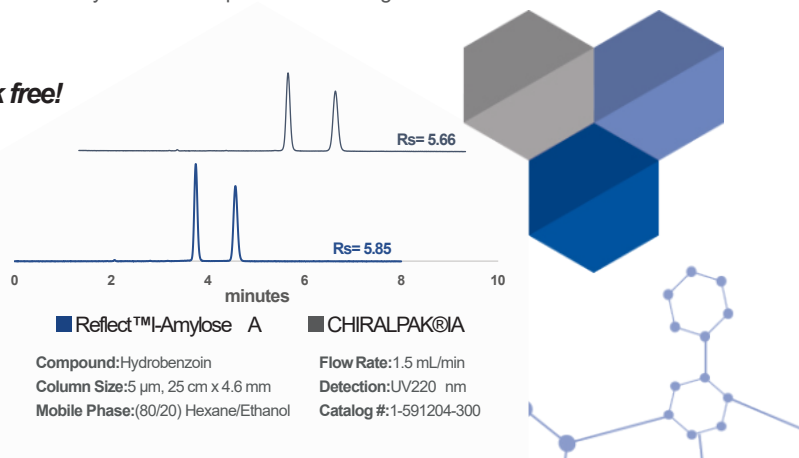
\* DAICEL, CHIRALPAK, IA, IA-3, IB, IB-3, IC, IC-3, AD, AD-H, AD-3, OD, OD-H, OD-3, and OJ are registered trademarks of DAICEL Corporation. All such trademarks are used by Chiral Technologies under license from DAICEL Corporation. Chiral Technologies, Inc. is a subsidiary of DAICEL Corporation. Lux is a registered trademark of Phenomenex Inc.

## THE Reflect™ GUARANTEE

**Rely on guaranteed performance - try Reflect chiral columns risk free!**

If an analytical column (≤4.6mm ID) does not provide at least equivalent or better separation as compared to a competing column of the same particle size, phase type, and dimensions, return the column within 45 days for a full refund.

*Reflect I-Amylose A provides equivalent separation of Hydrobenzoin*



# Whelk-o<sup>®</sup> 1

1-(3,5-dinitrobenzamido)-1,2,3,4-tetrahydrophenanthrene



## The Original Immobilized Phase

- Excellent method development column with applicability to a wide range of compound classes
- Alternate selectivity to polysaccharide chiral stationary phases
- Covalently bonded for long term performance and broad mobile phase compatibility
- Broad range of particle sizes and dimensions for analytical to preparative scale separations
- High loading capacity for excellent scalability in preparative applications
- Choice of enantiomeric phases allows inversion of peak elution order

## Whelk-O 1 is available in 1.8 $\mu$ m columns!



- Increase throughput and resolution—Great for rapid chiral screening
- 1.8  $\mu$ m fully porous particles for high efficiency separations in both UHPLC & UHPSFC

## CHIROFIL<sup>®</sup> & CHIROFIL ME

(+) or (-)-(18-Crown-6)-tetracarboxylic acid

- Best choice for the separation of amino acids and compounds containing primary amines
- Exhibits excellent durability due to covalent bonding
- Columns available in both enantiomeric forms, which allows for the inversion of peak elution order
- Most robust crown ether column for HPLC



Visit [chiral.com](http://chiral.com) for technical resources, including hundreds of applications on all Regis phases.

## FREE CHIRAL SCREENINGS

Let us find the best column for your compound. Start with a free chiral screening conducted by Regis' experts in chiral separations. Contact us to get started today and receive results in as little as three days!

3 Steps + 3 Days = Results

- 1 Execute a CDA (optional).
- 2 Complete a submission form.
- 3 Send us a small sample of your racemate.

### Not sure where to start?

Regis recommends building a small library that have complementary selectivities to guarantee the most hits and durability for high volume screening. Ask our technical experts to recommend a selection of columns based on your needs and receive a discount on your personalized chiral screening kit!

# CHiral Stationary Phases



## MOST POPULAR REGIS CHIRAL PHASES AND COLUMN DIMENSIONS

Particle Size	Column Dimensions	(S,S)Whelk-O 1 Catal og #	(R,R)Whelk-O 1 Catal og #	I-Amylose A Catal og #	I-CelluloseB Catal og #	I-CelluloseC Catal og #	I-CelluloseJ Catal og #	C-Amylose A Catal og #	C-Cellulose B Catal og #	
3 µm*	5 cm x 2.1 mm	1-780128-300	1-780228-300	1-591109-300	1-592109-300	1-593109-300	1-594109-300	1-580109-300	1-590109-300	
	10 cm x 2.1 mm	1-780129-300	1-780229-300	1-591110-300	1-592110-300	1-593110-300	1-594110-300	1-580110-300	1-590110-300	
	15 cm x 2.1 mm	1-780130-300	1-780230-300	1-591111-300	1-592111-300	1-593111-300	1-594111-300	1-580111-300	1-590111-300	
	5 cm x 3 mm	1-780126-300	1-780226-300	1-591101-300	1-592101-300	1-593101-300	1-594101-300	1-580101-300	1-590101-300	
	15 cm x 3 mm	1-780124-300	1-780224-300	1-591105-300	1-592105-300	1-593105-300	1-594105-300	1-580105-300	1-590105-300	
	5 cm x 4.6 mm	1-780120-300	1-780220-300	1-591107-300	1-592107-300	1-593107-300	1-594107-300	1-580107-300	1-590107-300	
5 µm	15 cm x 4.6 mm	1-780122-300	1-780222-300	1-591103-300	1-592103-300	1-593103-300	1-594103-300	1-580103-300	1-590103-300	
	5 cm x 2.1 mm	1-780155-300	1-780255-300	1-591212-300	1-592212-300	1-593212-300	1-594212-300	1-580212-300	1-590212-300	
	5 cm x 3 mm	1-780159-300	1-780259-300	1-591211-300	1-592211-300	1-593211-300	1-594211-300	1-580211-300	1-590211-300	
	10 cm x 3 mm	1-780160-300	1-780260-300	1-591214-300	1-592214-300	1-593214-300	1-594214-300	1-580214-300	1-590214-300	
	5 cm x 4.6 mm	1-780101-300	1-780201-300	1-591201-300	1-592201-300	1-593201-300	1-594201-300	1-580201-300	1-590201-300	
	10 cm x 4.6 mm	1-780105-300	1-780205-300	1-591202-300	1-592202-300	1-593202-300	1-594202-300	1-580202-300	1-590202-300	
	15 cm x 4.6 mm	1-780151-300	1-780251-300	1-591203-300	1-592203-300	1-593203-300	1-594203-300	1-580203-300	1-590203-300	
	25 cm x 4.6 mm	1-780152-300	1-780252-300	1-591204-300	1-592204-300	1-593204-300	1-594204-300	1-580204-300	1-590204-300	
	25 cm x 10 mm	1-780102-300	1-780202-300	1-591205-300	1-592205-300	1-593205-300	1-594205-300	1-580205-300	1-590205-300	
	25 cm x 21.1 mm	1-780107-300	1-780207-300	1-591206-300	1-592206-300	1-593206-300	1-594206-300	1-580206-300	1-590206-300	
	25 cm x 30 mm	1-780103-300	1-780203-300	1-591207-300	1-592207-300	1-593207-300	1-594207-300	1-580207-300	1-590207-300	
	25 cm x 50 mm	1-780104-300	1-780204-300	1-591208-300	1-592208-300	1-593208-300	1-594208-300	1-580208-300	1-590208-300	
	10 µm	15 cm x 4.6 mm	1-786251-300	1-786703-300	1-591303-300	1-592303-300	1-593303-300	N/A	1-580303-300	1-590303-300
		25 cm x 4.6 mm	1-786615-300	1-786515-300	1-591304-300	1-592304-300	1-593304-300	N/A	1-580304-300	1-590304-300
25 cm x 10 mm		1-786625-300	1-786525-300	1-591305-300	1-592305-300	1-593305-300	N/A	1-580305-300	1-590305-300	
25 cm x 21.1 mm		1-786635-300	1-786535-300	1-591306-300	1-592306-300	1-593306-300	N/A	1-580306-300	1-590306-300	
25 cm x 30 mm		1-786703-300	1-786709-300	1-591307-300	1-592307-300	1-593307-300	N/A	1-580307-300	1-590307-300	

\*Whelk-O 1 packaged with 3.5µm particle size

Contact us for additional CSPs, sizes, and a personalized quotation.

JASCO FRANCE SAS  
17 rue des Cerisiers  
91090 LISSES  
www.jascofrance.fr  
Tél : 01.64.97.09.60