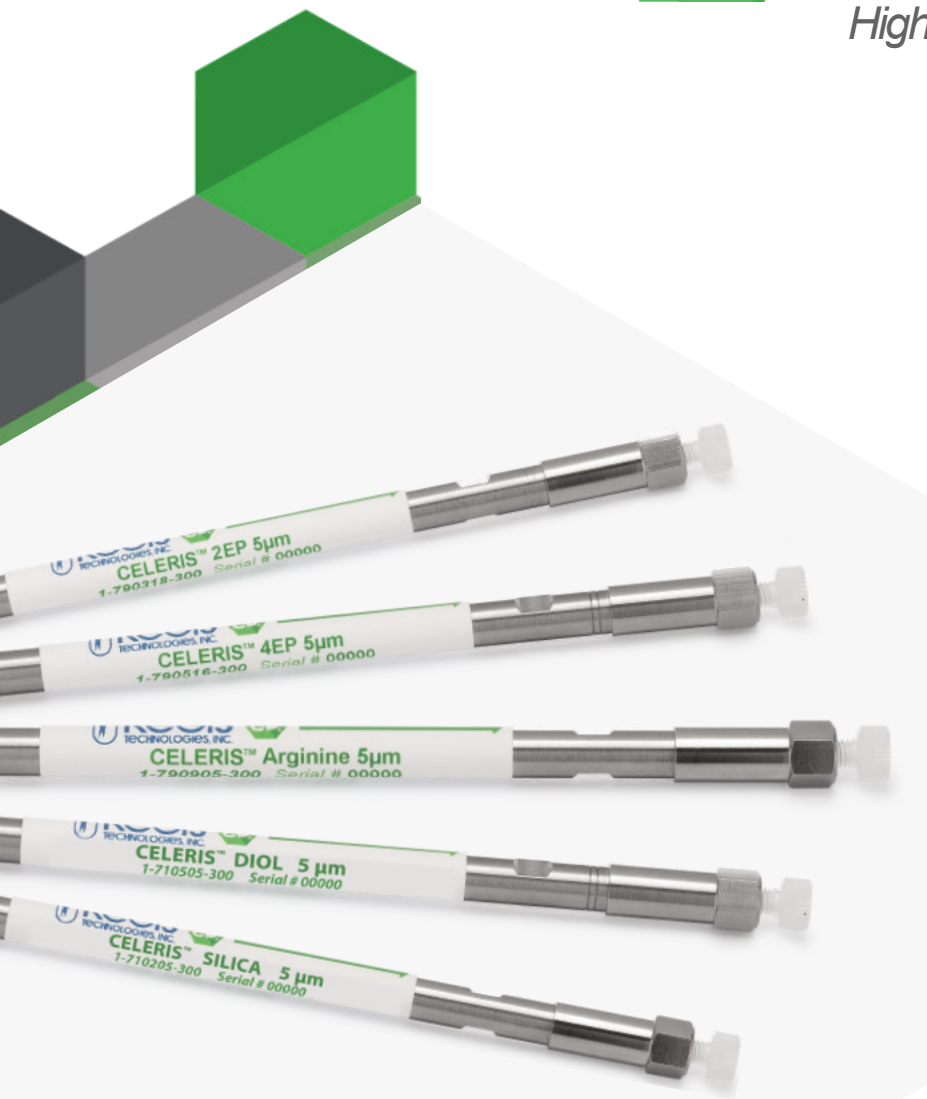




CELERIS™

Achiral SFCColumns

High Performance SFCSeparations



Packed Columns for SFCSeparations

- Broad Selectivity
- Scalable from Analytical to Prep
- High Efficiency 3-, 5-, and 10µm Phases

CELERIS™ Achiral SFC Columns

High Performance SFC Separations at an Affordable Price

Supercritical fluid chromatography (SFC) is widely recognized as a preferred technique for chiral applications. More chemists are discovering the benefits of SFC as a greener alternative to HPLC separation of complex samples containing a range of different functional groups and polarities. SFC provides better resolution, faster separation, and higher sample throughput compared to HPLC.

The CELERIS™ family of achiral stationary phases has been specifically designed for SFC separations, delivering high capacity, broad selectivity, excellent peak shapes, and reproducible performance over long column lifetimes. CELERIS™ high performance phases provide rapid separation and recovery of purified components at a lower price than competitor offerings, enabling use of larger column sizes to reduce the number of purification cycles required to achieve purity of the batch.

30%
Savings

CELERIS™ columns deliver high performance with an average savings of 30% over competitive column prices.



CELERIS™ Achiral Media Specifications

Pore Size	100Å
Surface Area	350 m ² /g
Particle Size	3-, 5-, and 10µm

CELERIS™ 2EP & 4EP Columns

Ethyl pyridine phases are the workhorse phases for preparative and process scale SFC purifications. CELERIS™ 2EP (2-ethyl pyridine) and 4EP (4-ethyl pyridine) media is designed to be highly reproducible based on tight product specifications and low metal content. CELERIS™ 2EP is especially well-suited for separation of basic compounds and exhibits broad selectivity towards a variety of other compound types. The CELERIS™ 4EP phase offers alternate selectivity to the 2EP phase.

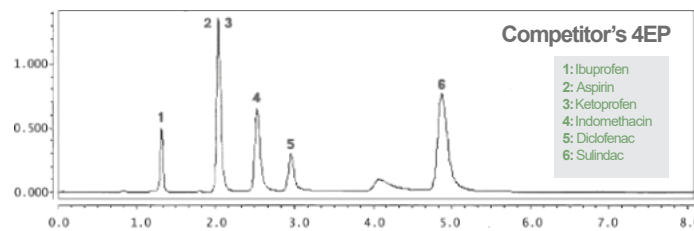
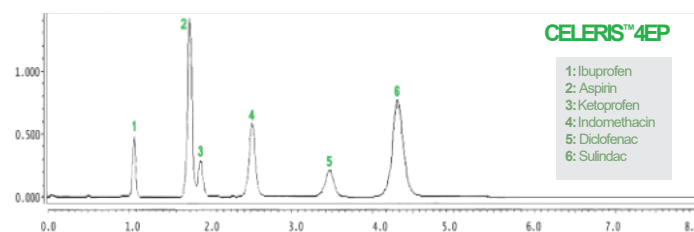
2-Ethyl Pyridine Chemical Structure



4-Ethyl Pyridine Chemical Structure



CELERIS™ ethylpyridine phases provide similar or better separation than competing EP phases



Column Dimensions: 15 cm x 4.6 mm, 5 µm; Mobile Phase: CO₂/CH₂OH (80/20); Flow Rate: 3.20 mL/min; Temperature: 40°C; Pressure: 125 bar; Detection: UV230 nm

CELERIS™ Achiral SFC Columns

Broad Selectivity, Scalable from Analytical to Prep

CELERIS™ Amino Columns

The CELERIS™ propyl-amine phase is bonded to 100Å silica and offers a high degree of polar selectivity over traditional silica or Ethyl Pyridine phases, allowing a high degree of retention for polar amine compounds.

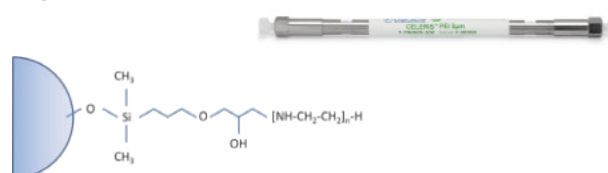
Amino Chemical Structure



CELERIS™ PEI Columns

The CELERIS™ polyethylenimine (PEI) phase has nearly 3X more amino groups than traditional Amino phases. The stationary phase is a modified polymer which includes several tertiary amine groups in the skeleton of the phase. This unique selectivity allows faster elution to give high quality separations in shorter times.

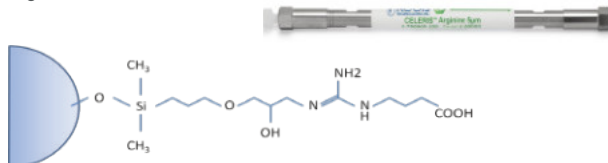
PEI Chemical Structure



CELERIS™ Arginine Columns

The arginine (ARG) phase is a silica surface modified with the amino acid arginine and exhibits both acidic and basic functionality. The ARG phase has a strong affinity to hydrophilic compounds and offers a mixed-mode type of selectivity compared to other SFC phases.

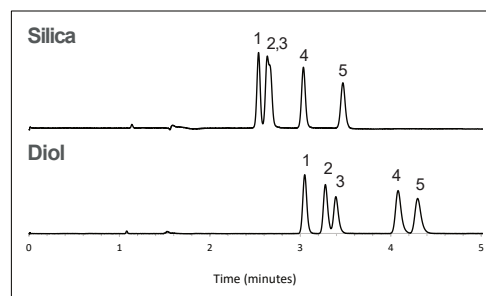
Arginine Chemical Structure



CELERIS™ Diol Columns

The CELERIS™ Diol phase is a traditional diol phase bonded to 100Å silica and offers alternate selectivity to silica columns, often with increased retention. The separation mechanism of the diol phase is hydrogen bonding interactions between diol groups and polar compounds.

Diol Chemical Structure

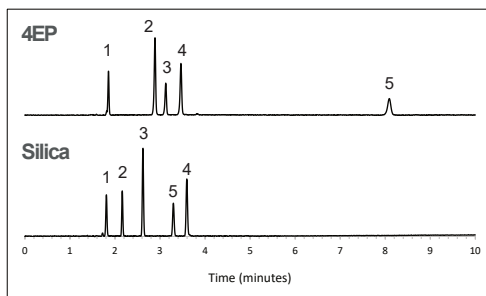


95/5 CO₂/MeOH; Peaks: 1. Ibuprofen; 2. Fenoprofen; 3. Flurbiprofen; 4. Naproxen; 5. Ketoprofen

CELERIS™ Silica Columns

The CELERIS™ silicaphase is an ultra-pure, metal-free silica that offers great polar selectivity.

Silica Chemical Structure



Gradient: 5-40% MeOH; 10 min.; Peaks: 1. Linalool; 2, 3, 4. Tetrahydro-1-naphthol; 3. Trifluoromethylbenzyl alcohol; 4. Bitertanol; 5. 1, 1-Bi-2-naphthol

Visit registech.com/celeris to learn more.

Need technical support? Email our chiral experts at techsupport@registech.com.

CELERIS™ Achiral SFC Columns

Ordering Information

Particle Size	Dimensions	2Ep Catalog #	4EP Catalog #	Animo Catalog #	Arginine Catalog #	Diol Catalog #	PEI Catalog #	Silica Catalog #
3 µm	2 cm x 3.0 mm		1-790528-300		-		-	
	5 cm x 2.1 mm	1-790210-300	1-790529-300	1-790729-300	-	1-710409-300	-	1-710109-300
	10 cm x 2.1 mm	1-790211-300	1-790530-300	1-790730-300	-	1-710410-300	-	1-710110-300
	15 cm x 2.1 mm	1-790212-300	1-790531-300	1-790731-300	-	1-710411-300	-	1-710111-300
5 µm	2 cm x 3.0 mm	1-790209-300	1-790528-300	1-790728-300	-	1-710408-300	-	1-710108-300
	5 cm x 3.0 mm	1-790208-300	1-790527-300	1-790727-300	-	1-710407-300	-	1-710107-300
	10 cm x 3.0 mm	1-790207-300	1-790526-300	1-790726-300	-	1-710406-300	-	1-710106-300
	15 cm x 3.0 mm	1-790206-300	1-790525-300	1-790725-300	-	1-710405-300	-	1-710105-300
	5 cm x 4.6 mm	1-790202-300	1-790521-300	1-790721-300	-	1-710401-300	-	1-710101-300
	10 cm x 4.6 mm	1-790203-300	1-790522-300	1-790722-300	-	1-710402-300	-	1-710102-300
	15 cm x 4.6 mm	1-790204-300	1-790523-300	1-790723-600	-	1-710403-300	-	1-710103-300
	25 cm x 4.6 mm	1-790205-300	1-790524-300	1-790724-300	-	1-710404-300	-	1-710104-300
	5 cm x 2.1 mm	1-790317-300	1-790515-300	1-790717-300	1-790917-300	1-710517-300	1-790817-300	1-710217-300
	10 cm x 2.1 mm	1-790316-300	1-790514-300	1-790716-300	1-790916-300	1-710516-300	1-790816-300	1-710216-300
	15 cm x 2.1 mm	1-790306-300	1-790506-300	1-790706-300	1-790906-300	1-710506-300	1-790806-300	1-710206-300
	5 cm x 3.0 mm	1-790315-300	1-790513-300	1-790715-300	1-790915-300	1-710515-300	1-790815-300	1-710215-300
10 cm x 3.0 mm	1-790313-300	1-790511-300	1-790713-300	1-790913-300	1-710513-300	1-790813-300	1-710213-300	
15 cm x 3.0 mm	1-790318-300	1-790516-300	1-790718-300	1-790918-300	1-710518-300	1-790818-300	1-710218-300	
5 cm x 4.6 mm	1-790314-300	1-790512-300	1-790714-300	1-790914-300	1-710514-300	1-790814-300	1-710214-300	
10 cm x 4.6 mm	1-790312-300	1-790510-300	1-790712-300	1-790912-300	1-710512-300	1-790812-300	1-710212-300	
15 cm x 4.6 mm	1-790305-300	1-790505-300	1-790705-300	1-790905-300	1-710505-300	1-790805-300	1-710205-300	
25 cm x 4.6 mm	1-790301-300	1-790501-300	1-790701-300	1-790901-300	1-710501-300	1-790801-300	1-710201-300	
25 cm x 10 mm	1-790302-300	1-790502-300	1-790702-300	1-790902-300	1-710502-300	1-790802-300	1-710202-300	
10 cm x 21.1 mm	1-790310-300	1-790517-300	1-790710-300	1-790910-300	1-710510-300	1-790810-300	1-710210-300	
15 cm x 21.1 mm	1-790309-300	1-790509-300	1-790709-300	1-790909-300	1-710509-300	1-790809-300	1-710209-300	
25 cm x 21.1 mm	1-790307-300	1-790507-300	1-790707-300	1-790907-300	1-710507-300	1-790807-300	1-710207-300	
15 cm x 30 mm	1-790308-300	1-790508-300	1-790708-300	1-790908-300	1-710508-300	1-790808-300	1-710208-300	
25 cm x 30 mm	1-790303-300	1-790503-300	1-790703-300	1-790903-300	1-710503-300	1-790803-300	1-710203-300	
15 cm x 50 mm	1-790311-300	1-790518-300	1-790711-300	1-790911-300	1-710511-300	1-790811-300	1-710211-300	
25 cm x 50 mm	1-790304-300	1-790504-300	1-790704-300	1-790904-300	1-710504-300	1-790804-300	1-710204-300	
10 µm	5 cm x 2.1 mm	1-790411-300	1-790613-300	-	-	1-710611-300	-	1-710311-300
	5 cm x 4.6 mm	1-790412-300	1-790614-300	-	-	1-710612-300	-	1-710312-300
	10 cm x 4.6 mm	1-790413-300	1-790615-300	-	-	1-710613-300	-	1-710313-300
	15 cm x 4.6 mm	1-790401-300	1-790601-300	-	-	1-710601-300	-	1-710301-300
	15 cm x 10 mm	1-790414-300	1-790604-300	-	-	1-710614-300	-	1-710314-300
	15 cm x 21.1 mm	1-790403-300	1-790605-300	-	-	1-710603-300	-	1-710303-300
	25 cm x 4.6 mm	1-790402-300	1-790602-300	-	-	1-710602-300	-	1-710302-300
	25 cm x 10 mm	1-790404-300	1-790606-300	-	-	1-710604-300	-	1-710304-300
	25 cm x 21.1 mm	1-790405-300	1-790607-300	-	-	1-710605-300	-	1-710305-300
	25 cm x 30 mm	1-790407-300	1-790609-300	-	-	1-710607-300	-	1-710307-300
25 cm x 50 mm	1-790408-300	1-790610-300	-	-	1-710608-300	-	1-710308-300	



JASCO FRANCE SAS
 17 rue des Cerisiers
 91090 LISSES
www.jascofrance.fr
 Tél : 01.64.97.09.60